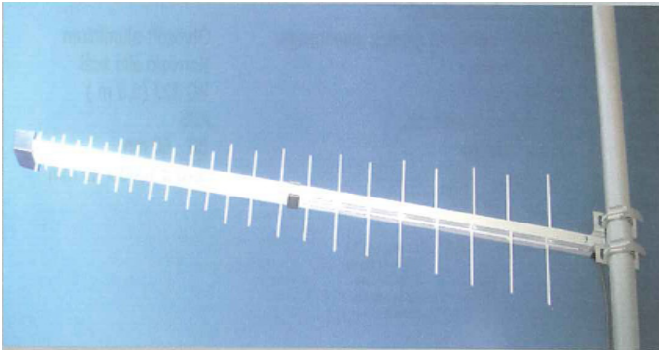
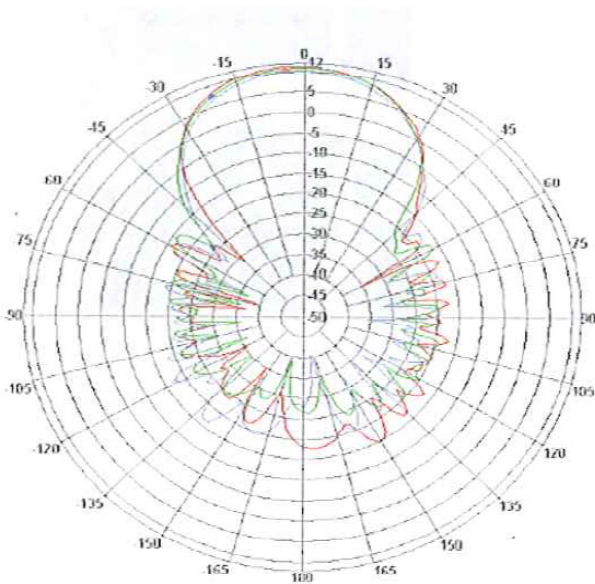


LPA922 Log periodic antenna

Broadband High-Gain directional antenna



- Excellent performance, 824-2170 MHz.
- Designed to withstand extreme conditions
- Easily installed and aligned. Ready to use.
- No assembly required.



Specifications

Electrical

Frequency range	824-970, 1710-2170 MHz
Nominal impedance	50 ohm
Gain	min 10,5 dBi
VSWR	<1,5:1
Maximum input power	10 W
Polarization	Vertical

Mechanical

Connector	SMA(m)
Cable	0,5m RG223
Mounting	mast (30-60 mm) or wall
Size	170x1000x40 mm

Other

Product No.	LPA922
-------------	---------------

Smarteq reserves the right to change specifications without prior notice.



Smarteq is certified according to
ISO/TS 16949, ISO 14001

550 072 C

Smarteq develops and supplies high-quality antennas and antenna systems for the wireless transfer of speech and data, communication to and from vehicles and machine to machine. Our staff is fully focused on developing high-performance antennas that will continue to set new standards of excellence that will exceed our customers' expectations

SMARTEQ™
antennas

Smarteq Wireless AB

Sweden

www.smarteq.com